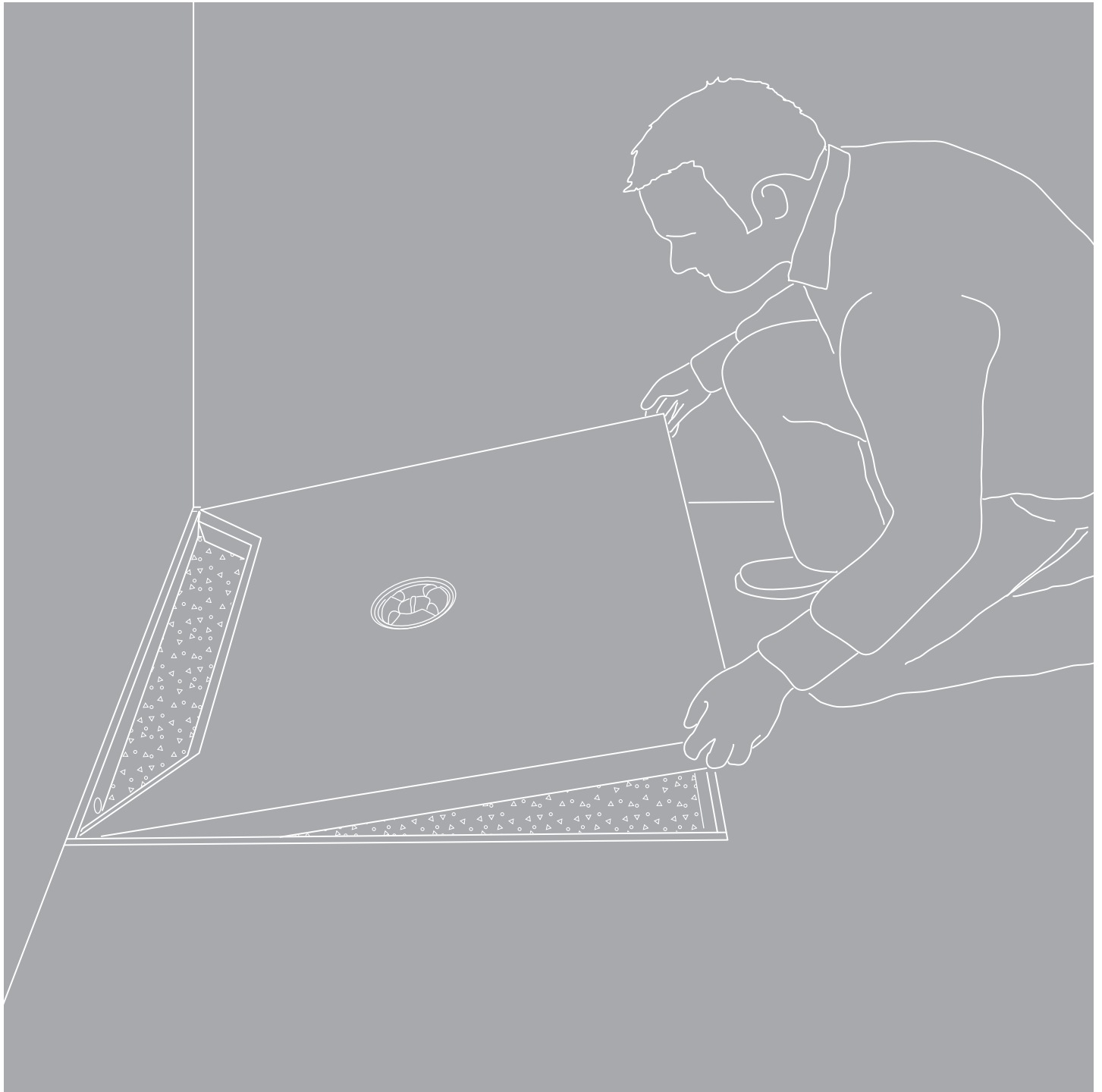


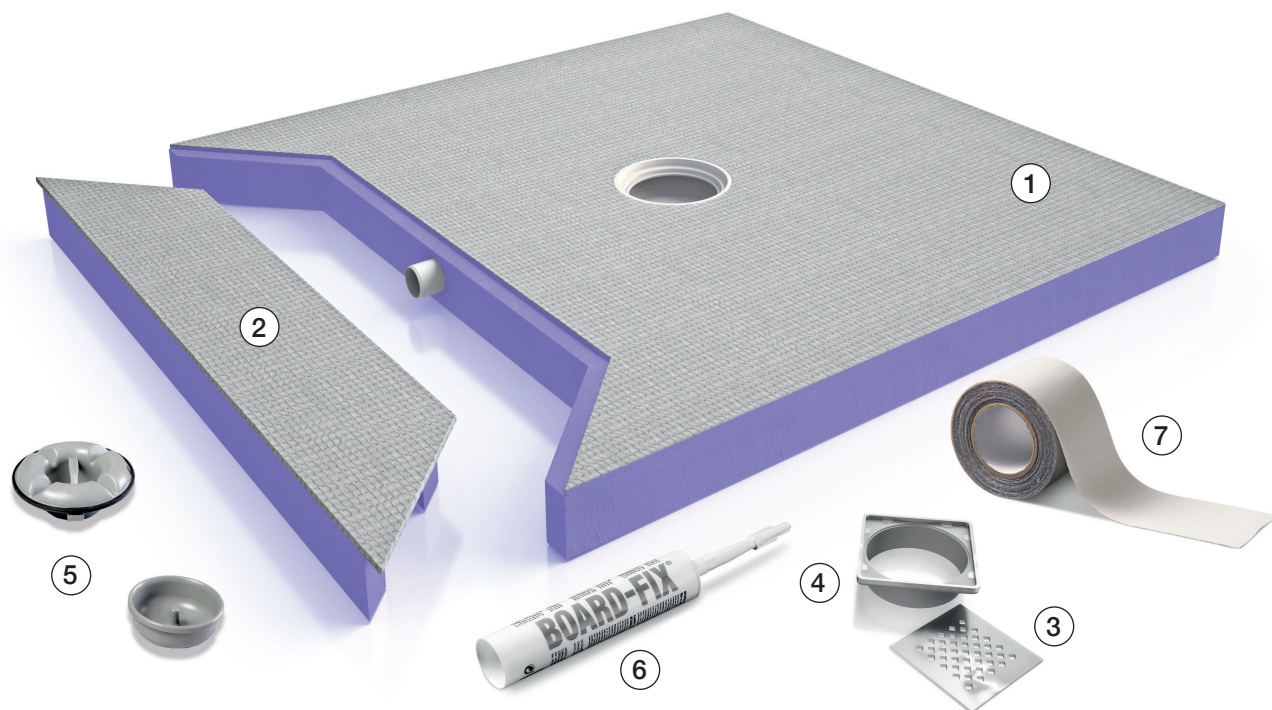
JACKOBOARD® Aqua Reno

The shower element for bathroom refurbishments.



Installation Instructions

JACKOBOARD® Aqua Reno – System components

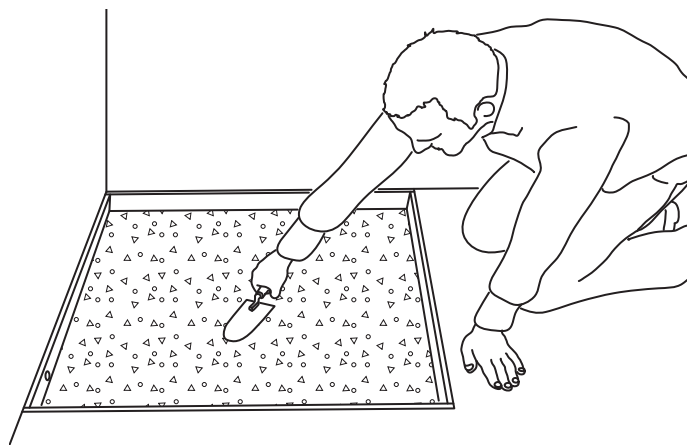


- ① JACKOBOARD® Aqua Reno - Shower element
- ② JACKOBOARD® Aqua Reno - Pipe duct element
- ③ Grate
- ④ Top piece
- ⑤ Odour trap (top and bottom sections)
- ⑥ BOARD-FIX® (special adhesive and sealing agent)
- ⑦ 10 m sealing tape

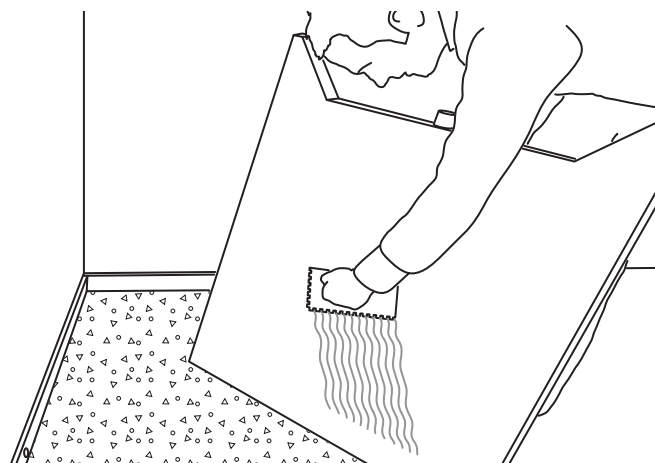
1) There are two possible ways to ensure the correct height of JACKOBOARD® Aqua Reno.

a) Using cement-based levelling screed. Pour the levelling screed into the recess and level off at the required height.

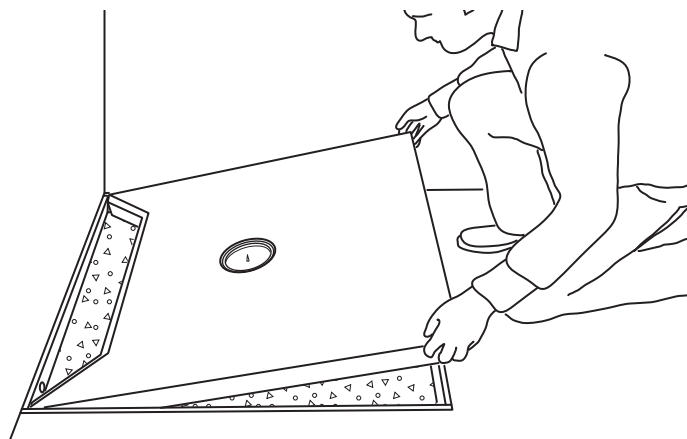
b) Using JACKOBOARD® construction boards. Cover the entire surface of the required thickness of construction board with tile adhesive and fix it into the recess.



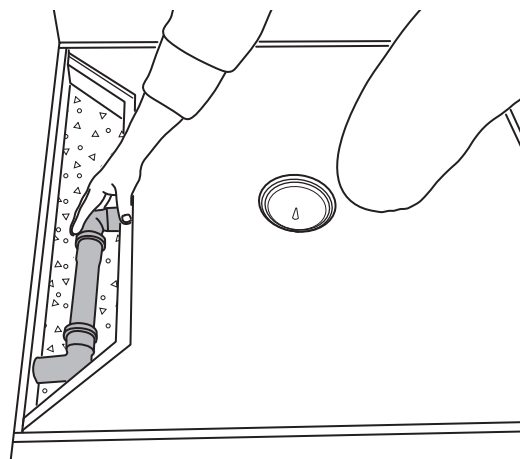
2) Apply tile or flexible adhesive with a notched trowel to the underside of the shower element.

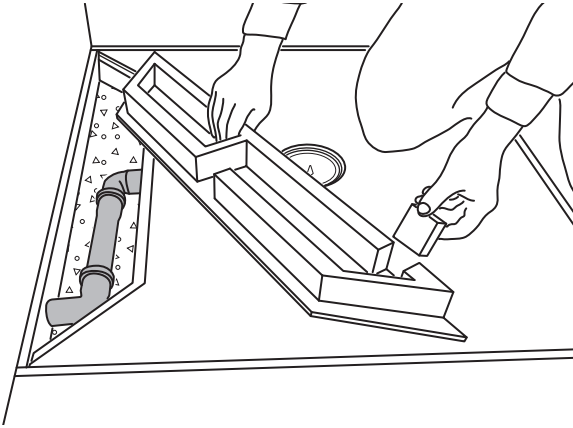


3) Position the shower element in the screed recess.

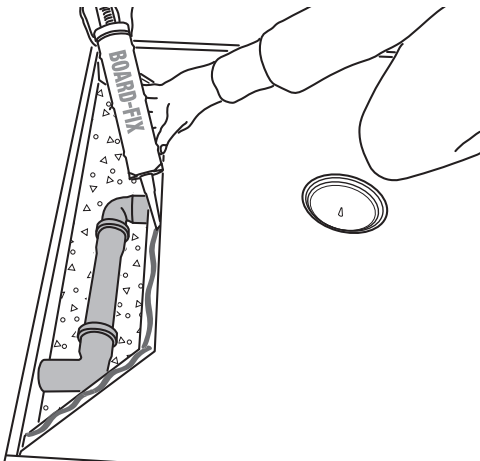


4) Connect the drain nozzle on the shower element (DN40) to the on-site drainpipe.

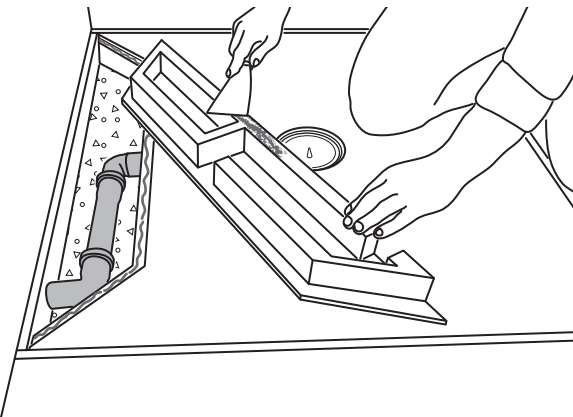




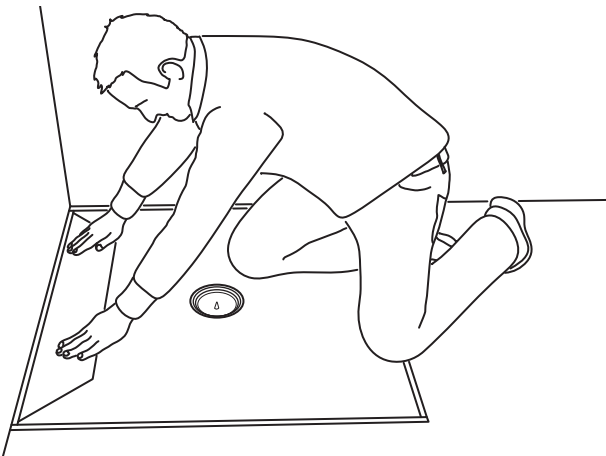
5) On the underside of the pipe duct element (2) the break-throughs for the waste pipe be made with a cutter.



6) Apply the BOARD-FIX® (6) special adhesive and sealing agent in beads to the shi lap on the shower element. Make sure the adhesive is applied consistently, with no interruptions.



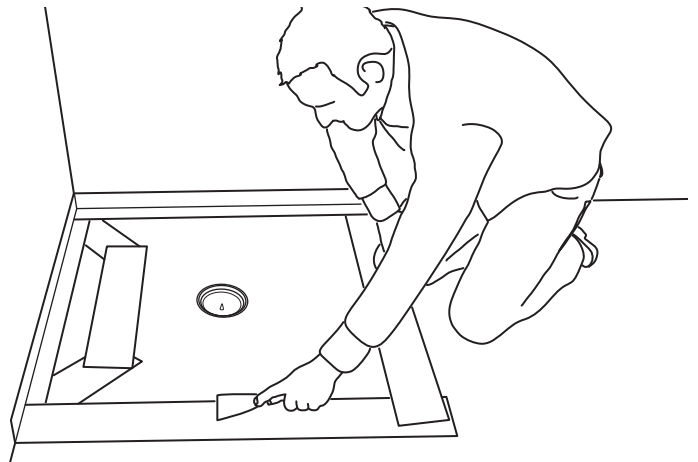
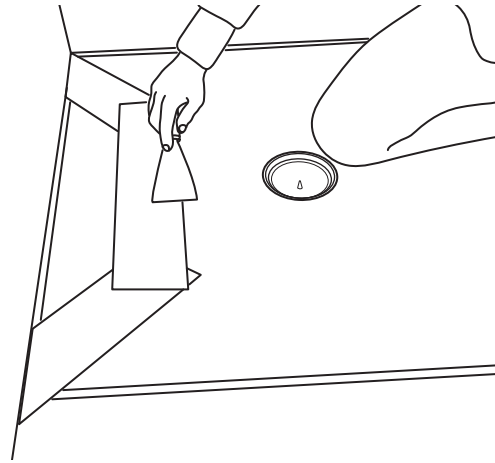
7) Then apply tile adhesive to the underside of the pipe duct element.



8) Position the pipe duct element (2) in the screed recess and press firmly into place. BOARD-FIX® (6) special adhesive and sealing agent guarantees the durable seal integrity of the bond.

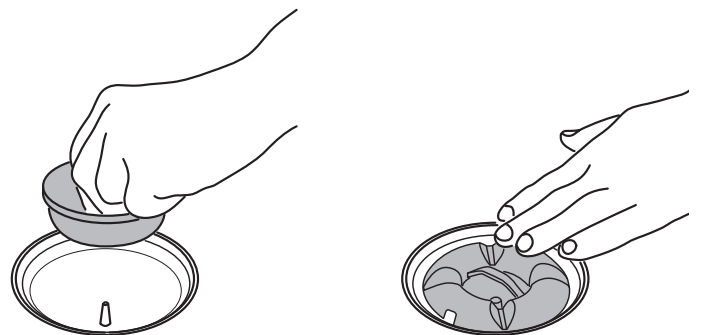
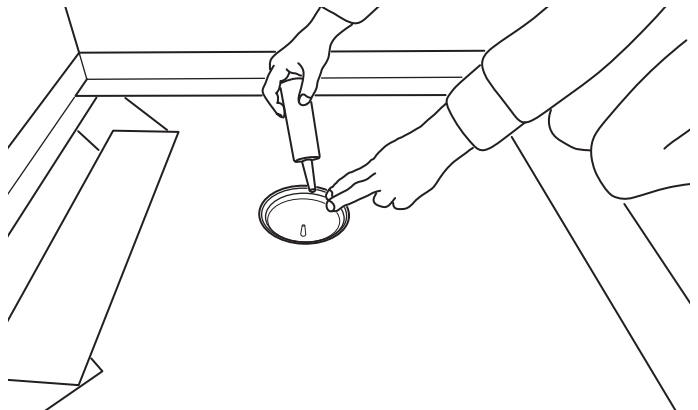
9) The butt joint between the pipe cover and the shower element is sealed additionally with a proprietary sealing strip (7) or similar, using an approved liquid-processed composite seal (e.g. mineral sealant slurries).

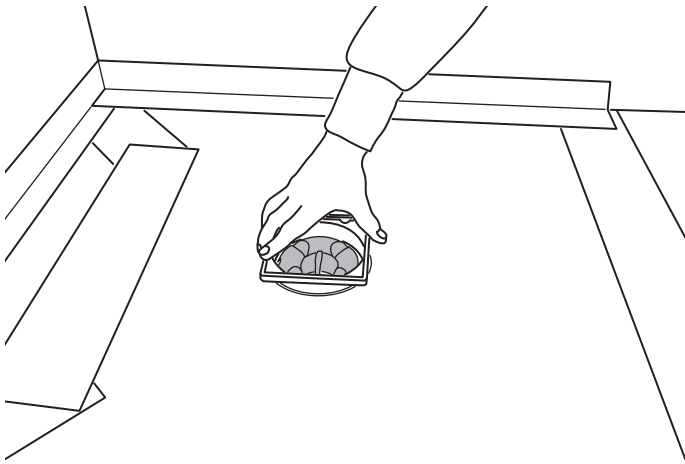
All connection joints to the screed and to the wall are also sealed with the process described above.



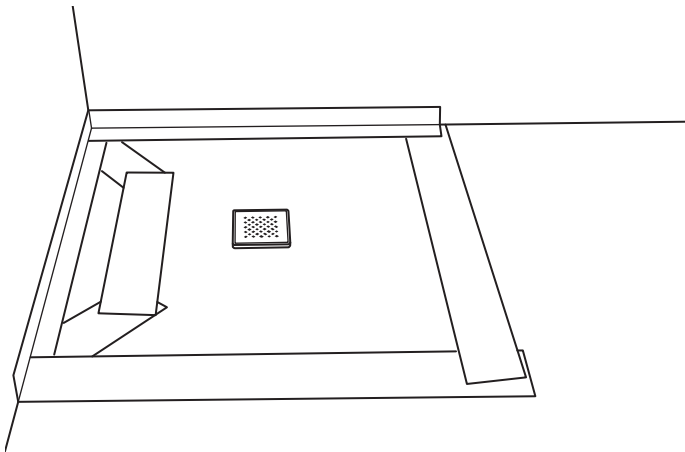
10) Before inserting the odour trap, first grease the inside edge of the drain.

Then insert the odour trap (bottom and top sections) and press firmly into place.





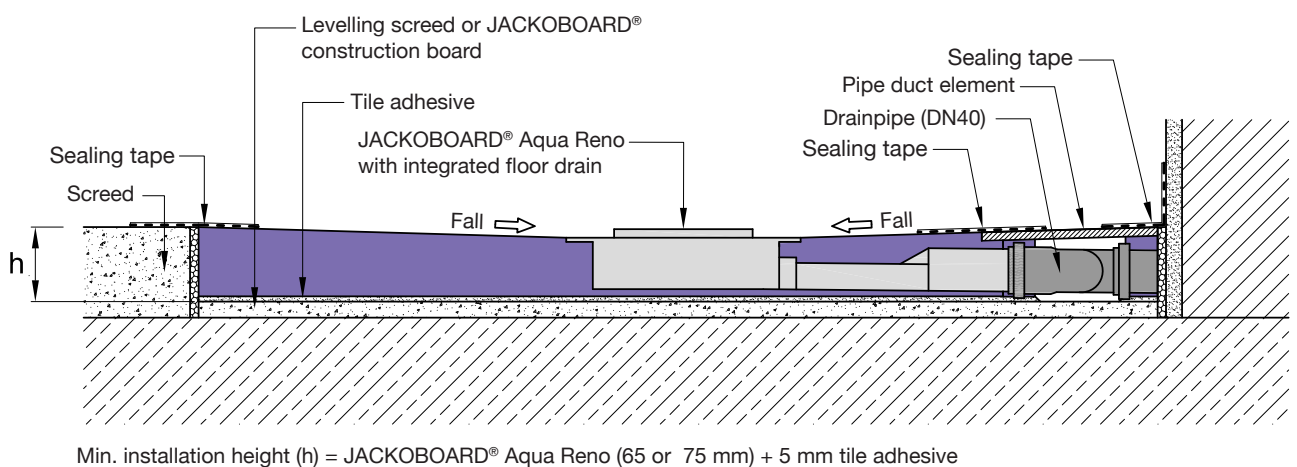
- 11)** Cut the top piece (4) to the right length to match the thickness of the tiles, and position in place. Use tile adhesive in the four corners to adjust the top piece (4) to exactly the right height.



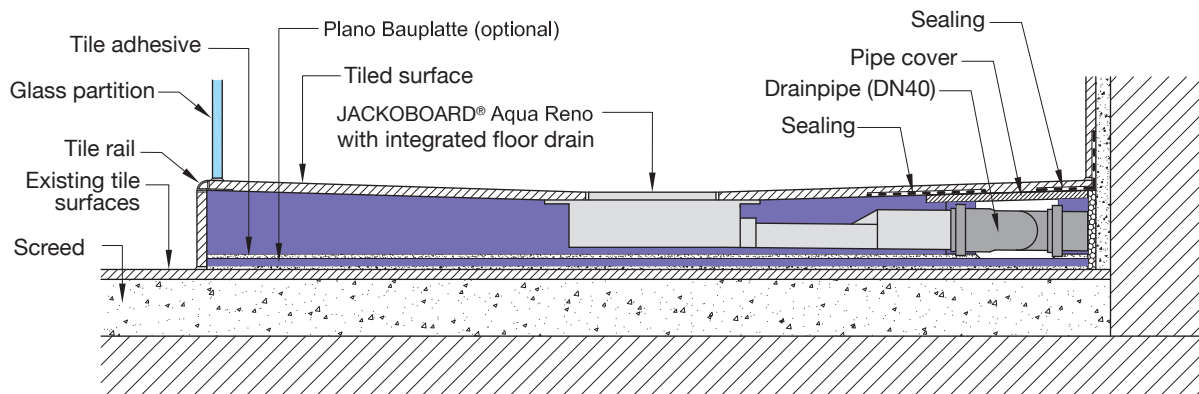
- 12)** Position the grate (3) in place. The shower element is ready for tiling.

Notes for laying tiles and boards on JACKOBOARD® Aqua Reno: JACKOBOARD® Aqua Reno is immediately tileable. All types and sizes of tiles can be used in principle. Special requirements only apply to mosaic tiles ≤ 25 mm. In such cases, we recommend using epoxy resin grout for the tile joints. If showers are to be wheelchair-accessible, they must be covered with tiles measuring $\geq 50 \times 50$ mm.

JACKOBOARD® Aqua Reno – Floor-level installation



JACKOBOARD® Aqua Reno – Structure with step on existing screed in older buildings



Please note

The information provided in this leaflet is based on our knowledge and experience to date. It does not constitute a guarantee in any legal sense. When using this product, please always bear in mind the circumstances of the particular intended application, especially with regard to physical, technical and legal construction issues.